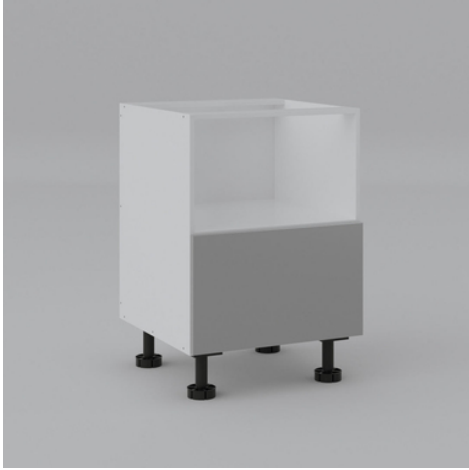
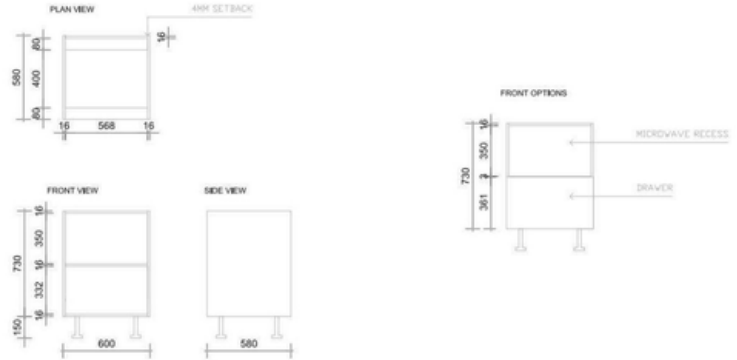




FKC600BMWUVLG - Base Microwave Cabinet 600mm with 1 Drawer in UV Light Grey



FKC600BMW : 600mm x 580mm x 730mm



DIMENSIONS

Length: 600mm, Width: 580mm, Height: 730mm (880mm with legs)

DESCRIPTION

- 600mm Base Microwave Cabinet with 1 Drawer UV Light Grey finish
- Pre-drilled, dowel and screw assembly
- Solid 16mm construction
- AUS COMPLIANT E1 HMR (high moisture resistance) Particle Board
- Includes adjustable legs (included in the price)
- 10-year structural warranty
- Flat Pack Includes; 4 Plastic Adj. Legs + Cabinet Dowels and Screws
- 1 Drawer with Hafele Soft Closing Runners

WARRANTY INFORMATION

- 10-Year Structural Warranty for Cabinetry & Doors* 10-Year Structural Warranty* Lifetime Warranty for Hardware (Hinges & Runners)
- Product replacement does not include installation or removal of the original product.
- Check product for damage before installation - installing a damaged product voids the warranty.

IMPORTANT NOTICE

- The dimensions of all ceramic products may vary from size guidelines due to material properties and the handmade manufacturing process.
- It is strongly recommended that any cut-outs made to your bench top are made based on the individual product dimensions.
- All pictures and drawings on this brochure are representational only, changes in the product may have occurred since the time of print.
- All prices on this brochure and The Sink Warehouse website are subject to change without notice.

To contact The Sink Warehouse email us at info@sinkwarehouse.com.au