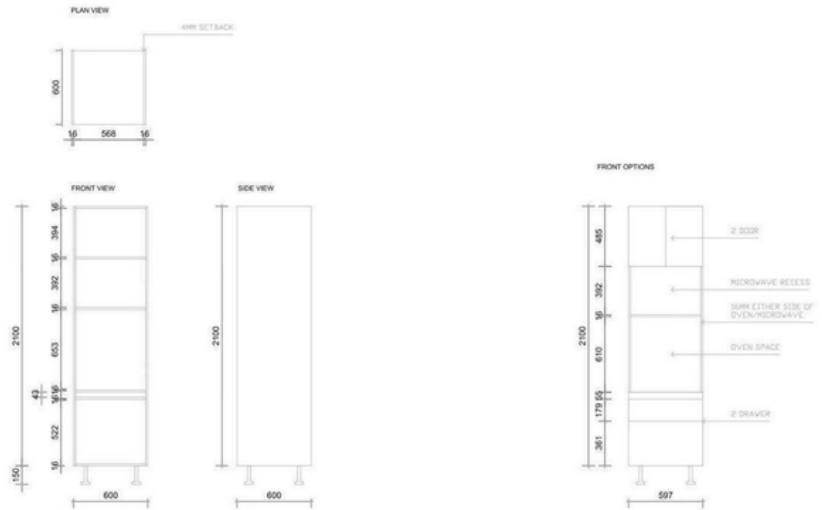




# FKC600TOMD2DR2UVW - Tall Oven/Microwave Cabinet 600mm with 2 Doors and 2 Drawers in UV White

FKC600TOM : 600mm x 600mm x 2100mm



## DIMENSIONS

Length: 600mm, Width: 600mm, Height: 2100mm

## DESCRIPTION

- Pre-drilled, dowel and screw assembly
- Solid 16mm construction
- AUS COMPLIANT E1 HMR (high moisture resistance) Particle Board
- Incl's adjustable legs and shelf (included in the price)
- 10-year structural warranty
- Flat Pack Includes; 4 Plastic Adj. Legs + Cabinet Dowels, Screws and 2 x Angle Brackets
- 2 Door with UV White finish includes Hafele Soft Close Hinges
- 2 Drawers with UV White finish include Hafele drawer runners

## WARRANTY INFORMATION

- 10-Year Structural Warranty for Cabinetry & Doors\* 10-Year Structural Warranty\* Lifetime Warranty for Hardware (Hinges & Runners)
- Product replacement does not include installation or removal of the original product.
- Check product for damage before installation - installing a damaged product voids the warranty.

## IMPORTANT NOTICE

- The dimensions of all ceramic products may vary from size guidelines due to material properties and the handmade manufacturing process.
- It is strongly recommended that any cut-outs made to your bench top are made based on the individual product dimensions.
- All pictures and drawings on this brochure are representational only, changes in the product may have occurred since the time of print.
- All prices on this brochure and The Sink Warehouse website are subject to change without notice.

To contact The Sink Warehouse email us at [info@sinkwarehouse.com.au](mailto:info@sinkwarehouse.com.au)