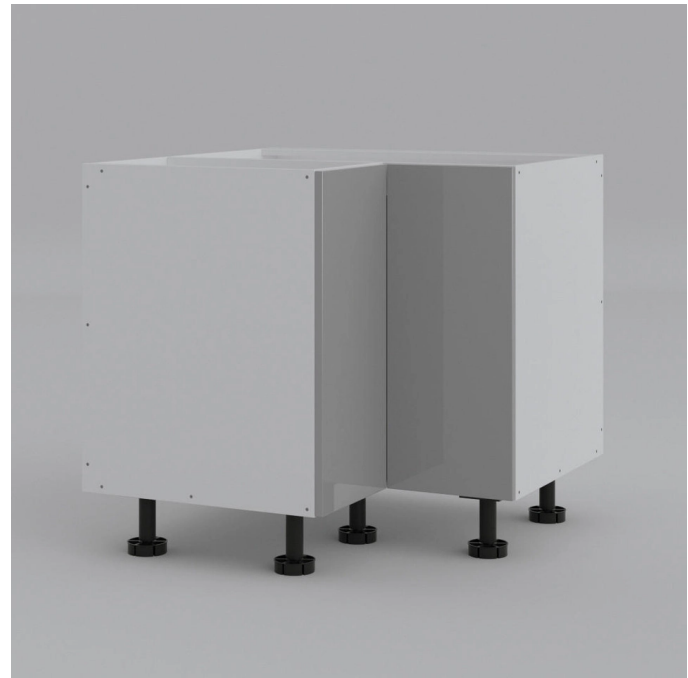
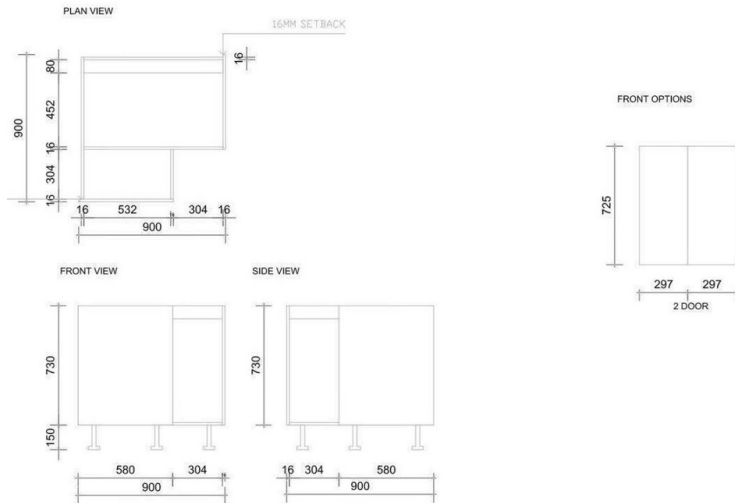


FKC900BCRN2DUVLG - Base Corner Cabinet 900mm with 2 Doors in UV Light Grey

FKC900BCRN : 900mm x 580mm x 730mm



DIMENSIONS

Length: 900mm, Width: 580mm, Height: 730mm (880mm with legs)

DESCRIPTION

- Pre-drilled, dowel and screw assembly
- Solid 16mm construction
- AUS COMPLIANT E1 HMR (high moisture resistance) Particle Board
- Incl's adjustable legs and shelf (included in the price)
- 10-year structural warranty
- Flatpack Includes ; 6 Plastic Adj. Legs + Cabinet Dowels and Screws, 1 Shelf
- 2 Doors with Hafele Soft Closing Hinges, UV Light Grey finish

WARRANTY INFORMATION

- 10-Year Structural Warranty for Cabinetry & Doors* 10-Year Structural Warranty* Lifetime Warranty for Hardware (Hinges & Runners)*
- Product replacement does not include installation or removal of the original product.
- Check product for damage before installation - installing a damaged product voids the warranty.

IMPORTANT NOTICE

- All pictures and drawings on this brochure are representational only, changes in the product may have occurred since the time of print.
- All prices on this brochure and The Sink Warehouse website are subject to change without notice.
- It is strongly recommended that any cut-outs are made based on the individual product dimensions

To contact The Sink Warehouse email us at info@sinkwarehouse.com.au