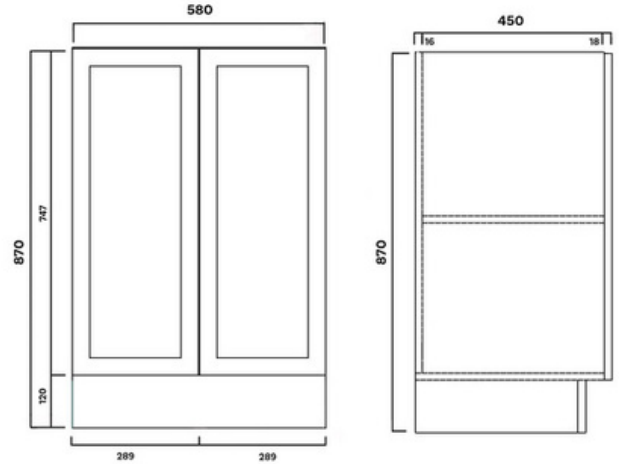


# VCHARL600VO - Charlotte Vanity Only 600mm



## DIMENSIONS

Height: 870 mm, Width: 450 mm, Length: 580 mm

## DESCRIPTION

- The Charlotte is a contemporary, floor-mounted bathroom vanity
- 580 mm long x 450 mm wide x 747 mm high (870 mm with kickboard)
- The vanity cabinet is constructed from high moisture resistant (HMR) boards which reduces the risk of mould and bacteria
- Completed with a 2 PAC polyurethane finish
- Installed with DTC runners and hinges, manufactured from high-grade materials, and incorporates soft close technology, reducing wear and tear and increasing the lifespan of the vanity
- Handles are not included, however, they can be added (additional costs will apply).
- Options for 1 or 3 tap holes and round or square basin

## WARRANTY INFORMATION

- 5 Year Replacement Product Warranty and 1 Year on Finishes
- Product replacement does not include installation or removal of the original product.
- Check product for damage before installation - installing a damaged product voids warranty.

## IMPORTANT NOTICE

- All pictures and drawings on this brochure are representational only, changes in the product may have occurred since time of print.
- All prices on this brochure and The Sink Warehouse website are subject to change without notice
- It is strongly recommended that any cut-outs made are made based on the individual product dimensions.
- Tapware and waste not included.

To contact The Sink Warehouse email us at [info@sinkwarehouse.com.au](mailto:info@sinkwarehouse.com.au)