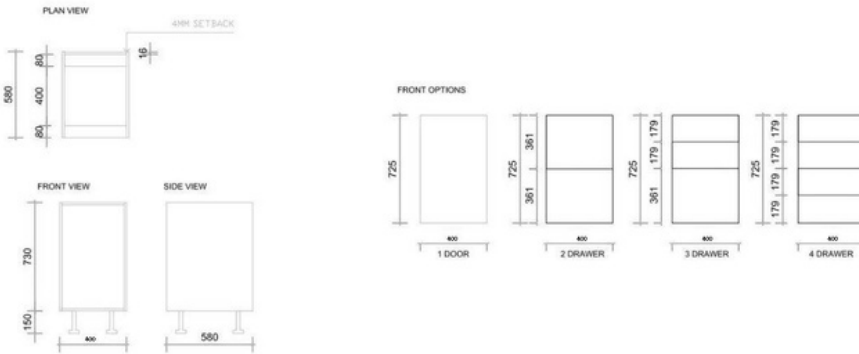


FKC400B1DPUSH - Base Cabinet 400mm with 1 Door in PU Shaker



DIMENSIONS

Length: 400mm, Width: 580mm, Height: 730mm (880mm with Kick Legs)

DESCRIPTION

Base Cabinets are the building blocks of your new kitchen providing storage and style. Our choice of cabinet sizes and configurations coupled with the extensive range of colours and finishes provides endless opportunities to customize your kitchen.

All our base units are supplied in flatpack form for convenience and economy.

- 400mm Base Cabinet, 1 Door with PU Shaker finish
- Pre-drilled, dowel and screw assembly
- Solid 16mm construction
- AUS COMPLIANT E1 HMR (high moisture resistance) Particle Board
- Incl's adjustable legs and shelf (included in the price)
- 10-year structural warranty
- Flatpack Includes; 4 Plastic Adj. Legs + Cabinet Dowels and Screws, 1 Shelf
- 1 Door with Hafele Soft Closing Hinges, PU Shaker finish

WARRANTY INFORMATION

- 10-Year Structural Warranty for Cabinetry & Doors* 10-Year Structural Warranty* Lifetime Warranty for Hardware (Hinges & Runners)*
- Product replacement does not include installation or removal of the original product.
- Check product for damage before installation - installing a damaged product voids the warranty.

IMPORTANT NOTICE

- All pictures and drawings on this brochure are representational only, changes in the product may have occurred since the time of print.
- All prices on this brochure and The Sink Warehouse website are subject to change without notice.
- It is strongly recommended that any cut-outs are made based on the individual product dimensions